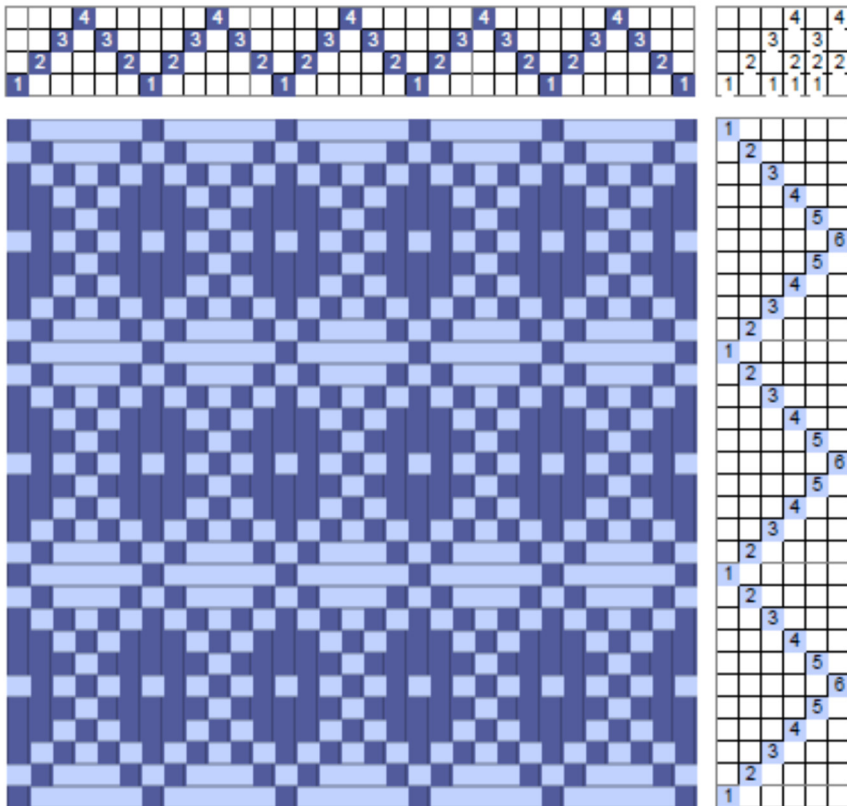


Waffle Weave

Waffle weave is not a weaving structure, it is a treadling method (see entry), that is, it does not have a threading associated with it but it is a treadling sequence that can be applied to a number of threadings, notably twills or overshot.



Waffle weave gets its name from the appearance of the fabric: cells are formed outlined by floats that appear as indentations.

Floats can be long; in the drawdown on the left, the waffle weave treadling has been applied to a pointed twill threading. The floats, both in the warp and in the weft are up to five threads long on both sides of the fabric.

This is the result of some treadling steps that are 1/3 (one thread up, three down) and some that are 3/1. Because of these floats, and their arrangement, the take-up can be considerable.

On the right is a fabric woven with the directions of the drawdown above. Because the warp and weft are the same color, the waffles are not very obvious, but the floats and the indentations cause good shimmering in the silk.

