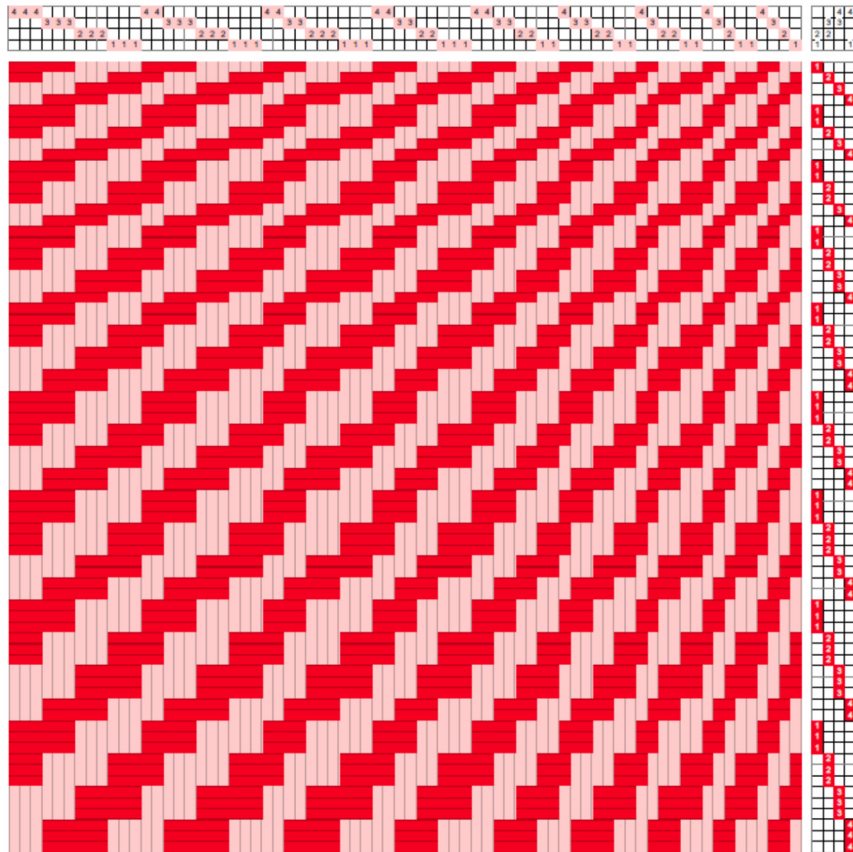


# Undulating Twill

By repeating shafts or treading steps (or both), we can change the twill from a geometric form to a curvier one. There are no specific rules for creating an undulating twill, and the length of the floats, both in the weft and in the warp, delimit the repeats possible. The threading and treading repeats can be long, but they are easy to remember if we form the undulation in a repetitive



manner. My favorite is shown in the draft on the left, where I start with 1, 2, 3, 4, then double each shaft in turn up, then triple them until I get to 4, 4, 4. Only one repeat is shown in the drawdown because of the size of the draft.

Below is fabric woven from the drawdown; it shows how the undulations form over the course

of several repeats.

The treading here is *tromp as writ*. Because of the repetition of the treading steps, a floating selvage is needed. A straight twill treading is also possible.

Undulating twills can also be formed on pointed twills.

The sett must be carefully planned because the floats can vary a great deal across the fabric.

