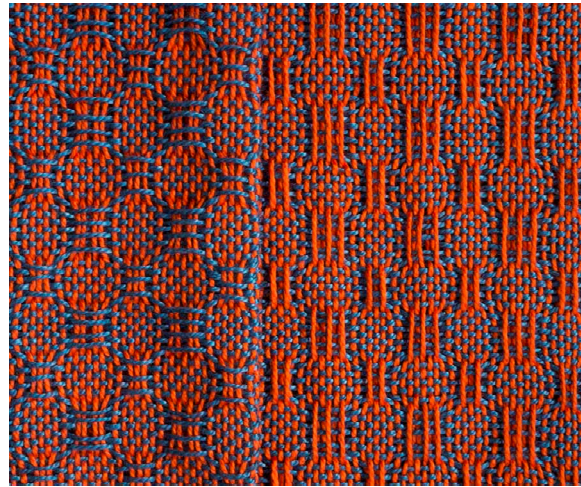


## Twills

My functional definition of a twill is a structure with staggered floats. The fabric on the left below shows four different twills; regardless of the motifs produced, the floats are staggered.



There are several classes of twills. In contrast, the fabric below has warp and weft floats organized in blocks, and thus it is not a twill.



It is a valuable characteristic of twills that their threading and treadling are interchangeable. This is shown in the twill fabric above and the drawdown on the right. The upper right quadrant (red and yellow) and the lower left quadrant (dark and light green) are “tomp as writ” (see straight twill entry), meaning that the twill treadling belongs to that threading. The other two twills are formed using the threading of one and the treadling of another.

