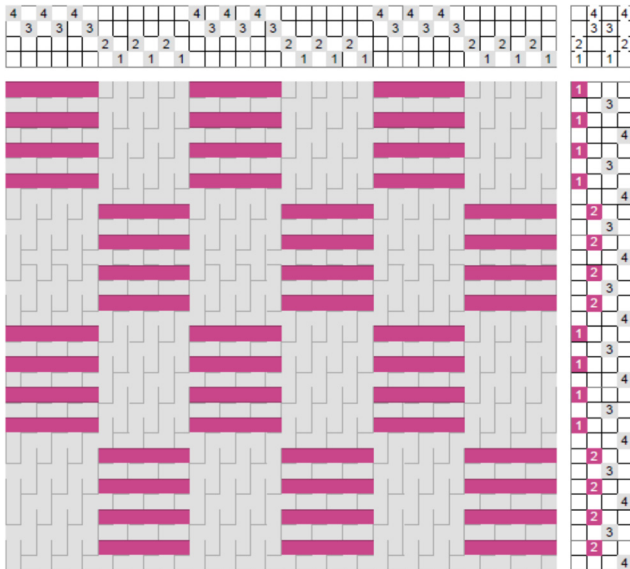


Turned Monk's Belt

Monk's Belt is a supplementary weft weave; a background warp and weft weave tabby while a larger and loftier supplementary weft weaves the pattern (see Monk's Belt). When we turn the draft, we obtain a supplementary warp structure. *The sett of the warp is that of the ground warp, slightly more open than the tabby sett to accommodate the supplementary warp.*



On the left is the drawdown of Monk's Belts. Below on the right is the turned draft, obtained with the following steps:

- 1) Choose a draft with a complete repeat in both threading and treading; two repeats of each will clarify what happens at the junction of repeats;
- 2) Rotate the draft; the treading becomes the threading and the threading becomes the treading;
- 3) Change the shaft, treadle and treading step numbers to positions;
- 4) The treading will be on the left side; slide it to the right side, to keep with the convention;
- 5) The tie-up is also on the left side; slide it to the right side, above the treading;
- 6) Transpose the tie-up so that all empty positions are filled, and all filled positions are empty;
- 7) Change positions back to numbers;
- 8) Do the drawdown; it should be identical to the original but rotated. The fabric is on the left.

numbers to positions; 4) The treading will be on the left side; slide it to the right side, to keep with the convention; 5) The tie-up is also on the left side; slide it to the right side, above the treading; 6) Transpose the tie-up so that all empty positions are filled, and all filled positions are empty; 7) Change positions back to numbers; 8) Do the drawdown; it should be identical to the original but rotated. The fabric is on the left.

Marcy's May and June 2020 blogs have more information on turning drafts.

