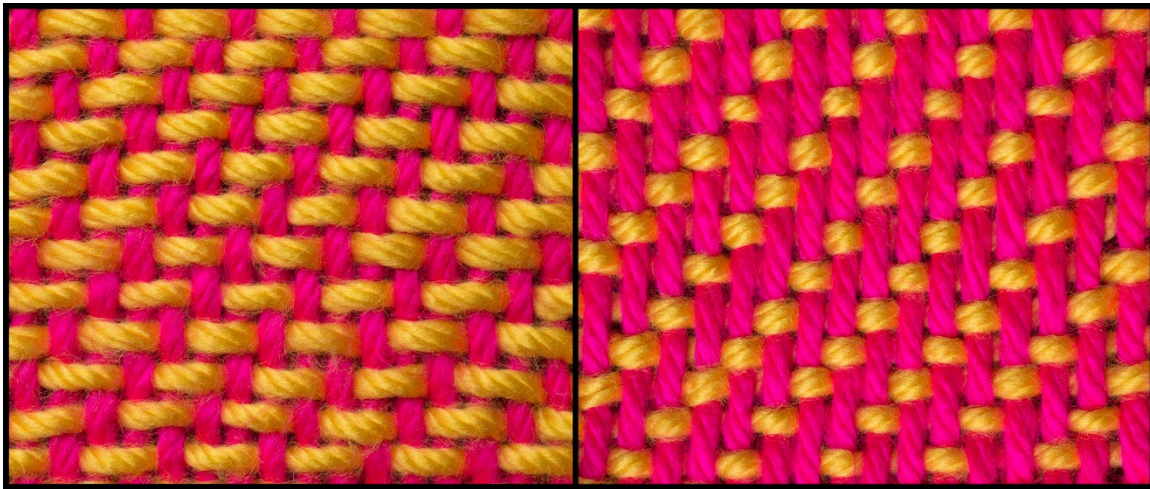
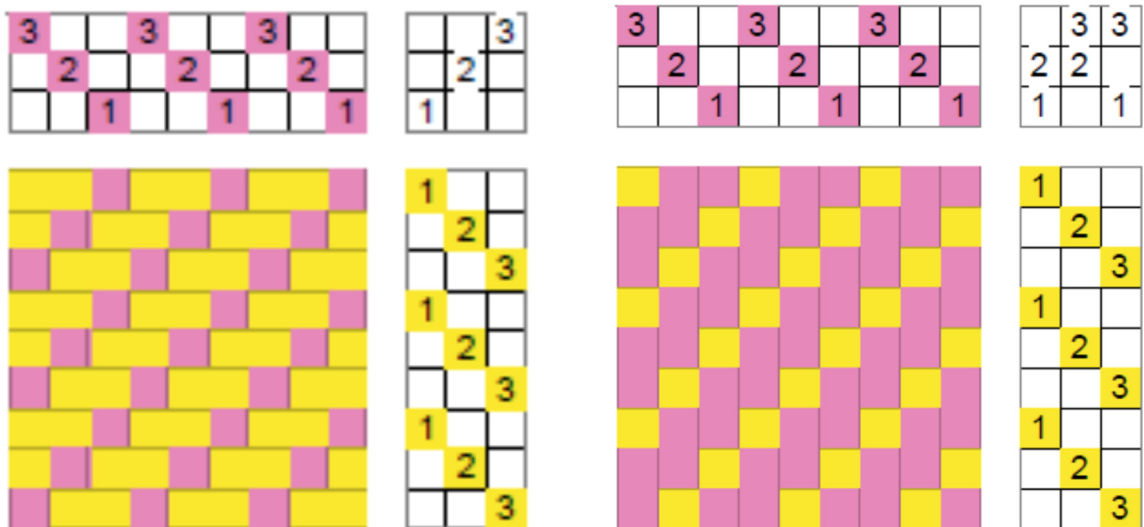


## Three-Shaft Straight Twill

A three-shaft straight twill is a twill produced with the minimum number of shafts. Since there is an odd number of shafts, the twill is unbalanced; one side is 2/1, the other is 1/2, meaning that the weft will go over two warp ends and under one, on top of the fabric and reversed underneath (or *vice versa*); this can be seen in the fabrics below.



The drawdown on the left is for the 2/1 side; the one on the right is for 1/2; both can be woven on the same side of the fabric by combining the two tie-ups (6 treadles).



This twill is also called a jean's twill, allegedly named from Genoa, Italy, where it originated. Blue jeans are woven with this twill, and derive their name from it, which explains the usual appearance of darker color on one side, lighter on the other, with two different blues (or a white and blue) for warp and weft.