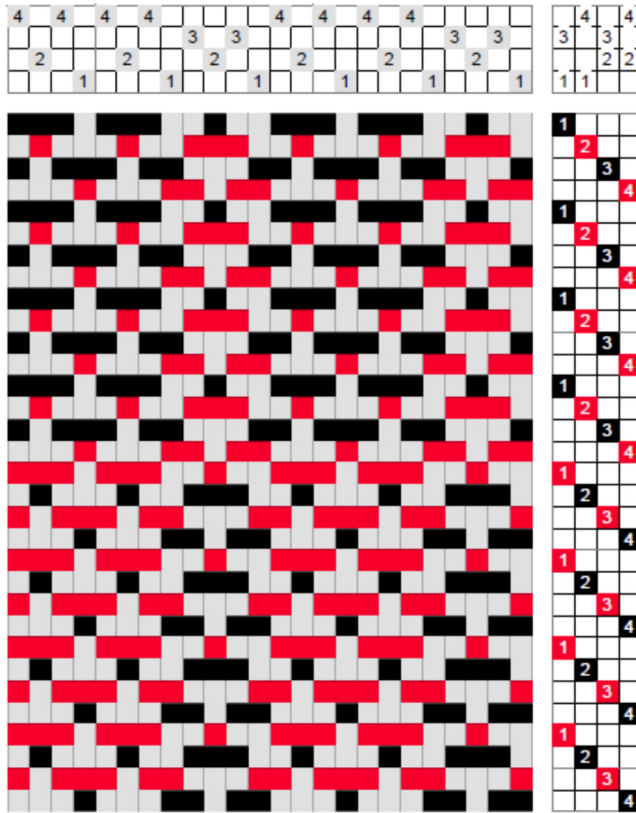


Taqueté

Taqueté in its simplest form is weft-faced summer and winter (see entry, singles). There are no



tabbies, but two pattern wefts are used, one for each block, although in her book, *Summer & Winter, A Weave for All Seasons*, Donna Sullivan shows more options. The pattern wefts cover the warp, which should be set appropriately for a weft-faced fabric, more open than for the traditional summer and winter.

The drawdown on the left shows how Taqueté is woven; in the fabric the grey warp is not visible (see below); to make a black block and a red block, the pattern picks for each block alternate: 1 & 3 followed by 1 & 4, then 2 & 3 followed by 2 & 4 with the two colors;

to reverse the block colors, the treadling sequence stays constant, but the colors are reversed, resulting in one color used in two adjacent picks, here red is used with pick on shafts 2 & 4 and then again on pick on 1 & 3.

The fabric on the right shows that the heights of the blocks have been changed by using a different number of picks.

The technique is sometimes called “woven on opposite”, but it is not the same meaning as other “on opposite” treadlings, since here 1 & 3 is followed by 1 & 4, while its true opposite would be 2 & 4. It is the blocks that are woven on opposite.

