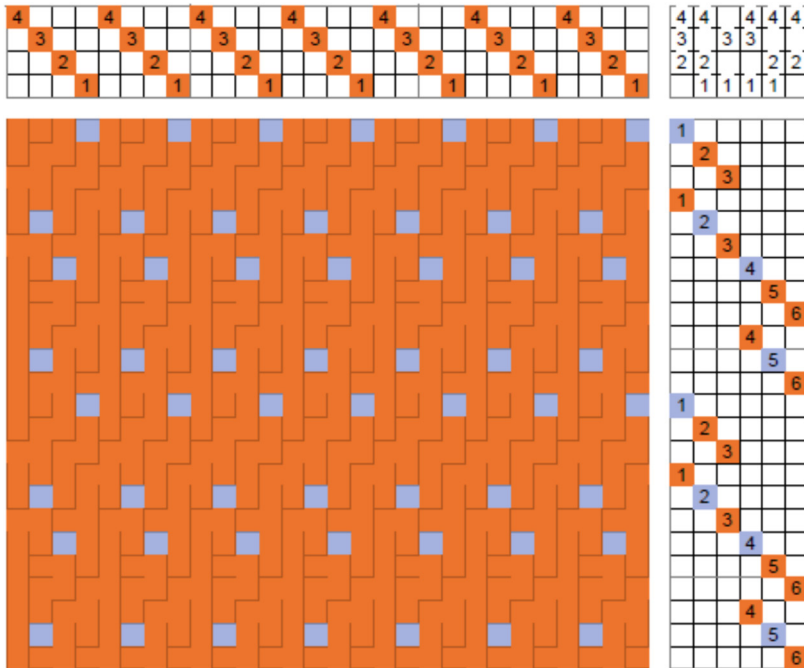


Swivel

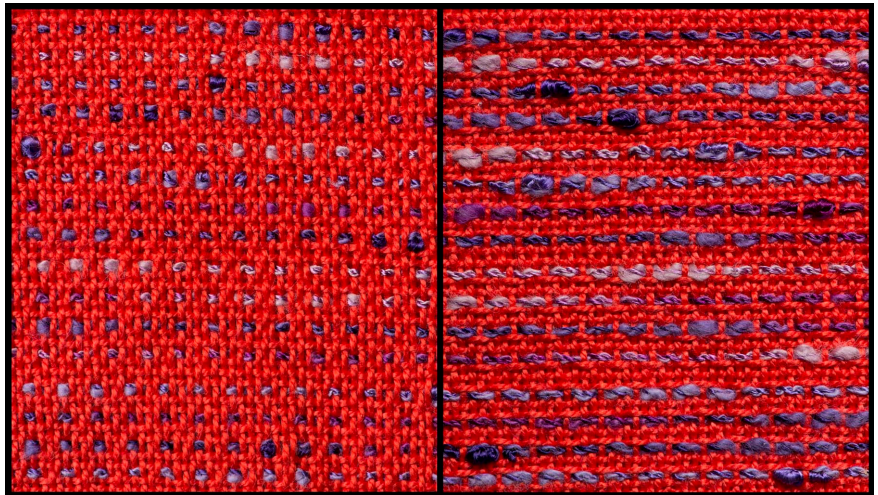
Swivel is a treadling method (see entry) that can be applied to any threading that allows plain weave. The treadling of swivel splits the plain weave shafts and weaves each separately where an



accent color is desired. The warp and the background weft are generally of the same size and color; a second weft of approximately the same size is used as an accent color. The draft on the left (for a rising shed loom) shows swivel woven on a straight twill.

The tabby treadling, 1 & 3 vs. 2 & 4, is split whenever the accent color is desired. In the

drawdown above, on the first repeat, the 1 & 3 pair is split; the accent weft covers the warp threads on shaft 1; on the next shot, the background weft covers warp threads on shaft 3; that's followed by a background weft shot covering threads on shafts 2 & 4, the other tabby. This sequence of three treadling directions can be repeated as long as desired to obtain the dots in the same place. The four possibilities are shown in the draft with two repeats



of the treadling; each set of 3-shot repeats places the accent weft in a different location, which can be arranged in any way desired, as long as the three shots are kept together.

The fabric is above; near right is the right side of the cloth, the back on the far right shows the floats of the accent yarn.