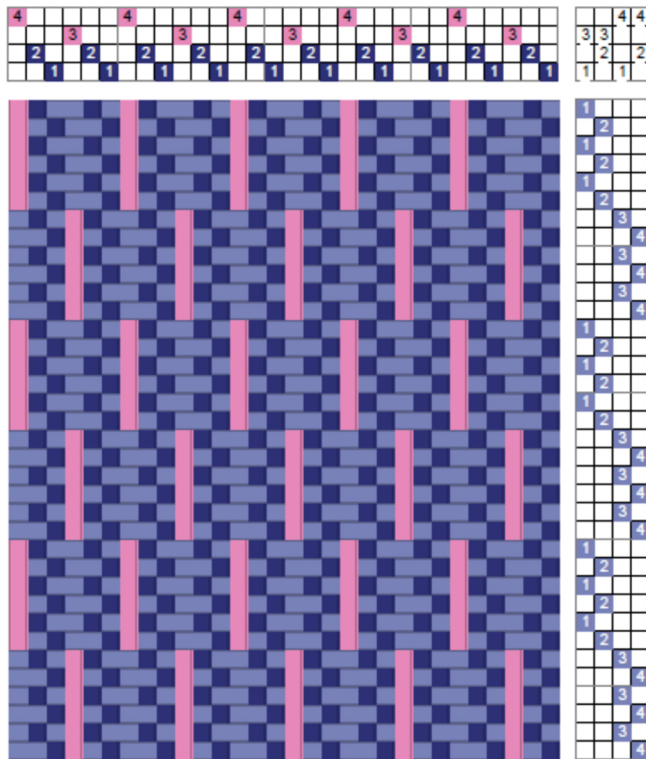


## Supplementary Warp Weaves

As the name implies, this group includes structures where there is a ground cloth and an additional warp, either to showcase a yarn or because the draft of a supplementary weft weave has been turned – the ground and supplementary weft have become the ground and supplementary warp (See *Supplementary Warp Patterning* by Barbara Walker).

On four shafts, two are threaded for the plain weave ground; then one or two can be used for the



supplementary warp. If two shafts are used, the floats can be staggered as shown in the drawdown on the left.

From the draft it appears that the plain weave is elongated, but it's not, because the supplementary warp is superimposed on the ground cloth. The places where there appears to be staggered elongated weft shots, it's actually where the supplementary warp floats on the other side of the cloth, so, in this particular case, the two sides are the same.

The fabric on the right was woven using the drawdown above, with the same warp and weft ground and a nylon ladder yarn for the supplementary warp.

Two ground warp ends and their associated supplementary warp end are sleyed together; in this case in an 8-dent reed: threads on shafts 1, 2, 3 in one dent; those on shafts 1, 2, 4 in the next.

