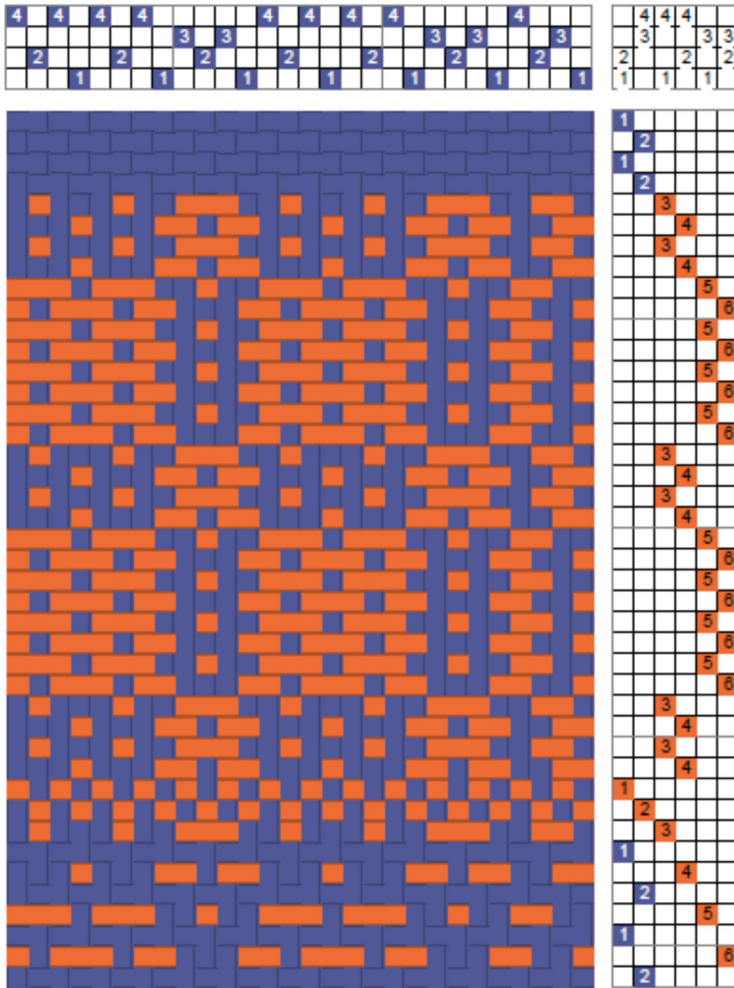


Summer and Winter - Singles

Summer and Winter is a tied-unit weave (see *Blocks*). On four shafts it has two blocks; two



shafts, 1 and 2, are used for ties, shaft 3 for block A, 4 for B. Floats in a block are limited to three threads because of the tie-down thread, thus the same block can be repeated adjacently. The fabric is woven using a background cloth, where the warp and ground weft are generally the same size, and a pattern weft, two to three times larger and loftier, which forms the floats in blocks.

In the drawdown on the left, there is a selvage threading (1, 3, 2, 4) followed by block A and two repeats of block B; the block sequence is repeated.

The drawdown shows the

treadling; tabby across the fabric is woven as 1 & 2 vs. 3 & 4. The first part of the draft shows the treadling of the blocks in an arrangement called singles, because, in each block, each tabby pick is used singly with a pattern pick. Block A is treadled with pattern shots 1 & 4 and 2 & 4 and block B with 1 & 3 and 2 & 3. Each block repeat has 8 shots, 4 pattern and 4 tabbies. The bottom part of the drawdown shows how the tabbies alternate with the pattern shafts in weaving.

The equivalent fabric is on the right.

