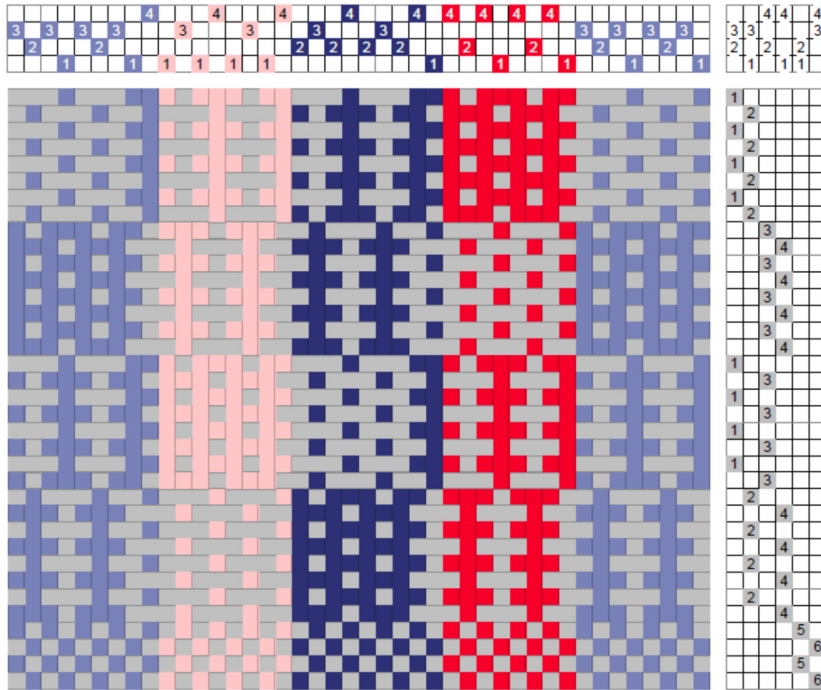


## “Summer and Winter” – 4 Blocks on 4 Shafts

Summer and winter (see entry) requires two shafts for the tie-down threads and one additional shaft for each block; thus, on 4 shafts only two blocks are possible. This structure extends summer and winter by adding two hybrid blocks, each using one of the tabbies and both of the



pattern shafts.

In the drawdown on the left and in the fabric below, the A and B classical blocks are respectively in light blue and red. The dark blue and pink are the hybrid blocks, C and D; the threading of the hybrids starts on shaft 4.

When a hybrid block follows a classical block, as here dark blue following red, an incidental thread on shaft 1 is added; when a classical block follows a hybrid block, here light blue (on the left) following pink,

an incidental thread on shaft 4 is added. The treadling of the blocks is shown in the drawdown; however, not shown are the tabbies, 1 & 2 vs. 3 & 4, alternating between pattern shots, as in classical summer and winter. The seemingly long warp floats in the drawdown are actually interlaced with the tabbies. In the fabric on the right, each block is followed by a band of plain weave to separate them visually.

Unlike true summer and winter, blocks are no longer independent, because they share pattern threads. Thus, when one block is woven, the other blocks also produce floats. However, the three-thread float of summer and winter is maintained, making this a sturdy fabric.

