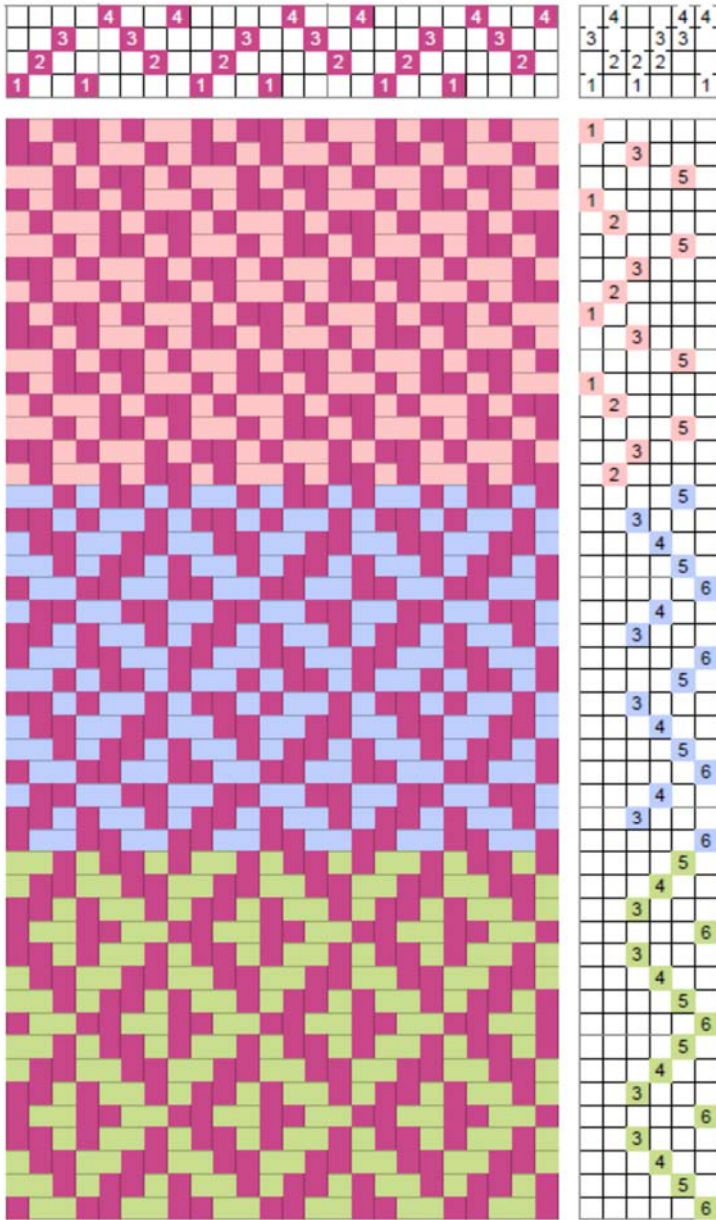


Shadow Twill



A shadow twill makes a warp motif which is shadowed by the weft. It is not to be confused with *shadow weave* (see entry) which is a color-and-weave effect or with *shadowy* (see entry), a treadling method which uses two wefts, one to make a design, the other to shadow it.

In her *A Handweaver's Pattern Book* ("the green book") Davison provides a threading (3 repeats here) and treadling sequences (2 repeats each here) shown on the left.

When choosing a specific treadling, it's best to re-arranged it for ease of weaving which I have done with the fourth treadling that Davison provides, shown below (fabric on the left). Even though the sequence only required 4 treadles, by employing the 6 usually available on 4-shaft looms, the treadling becomes easier.

