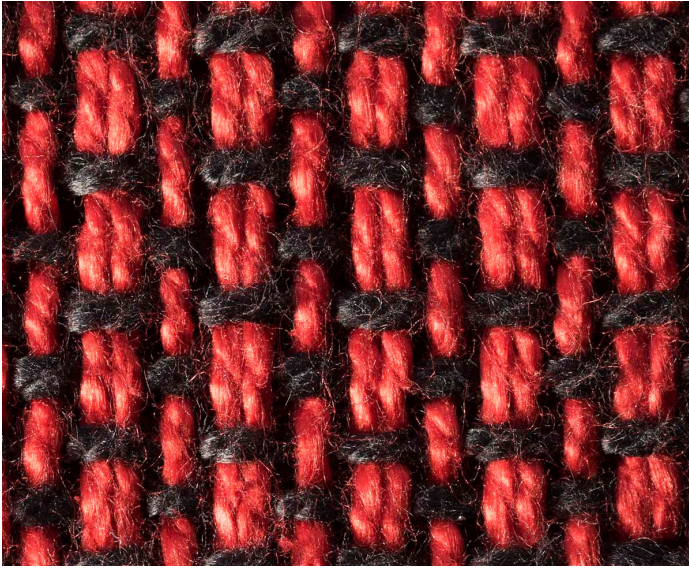


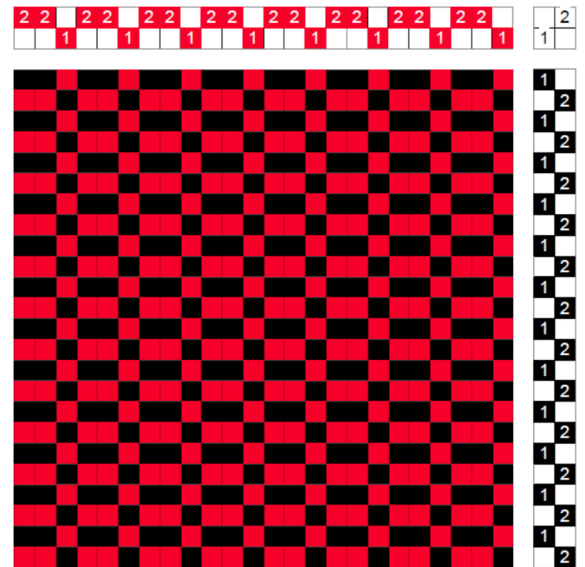
## Ribs

If we use more than one thread on a given shaft, we can form ribs. They can add texture to a

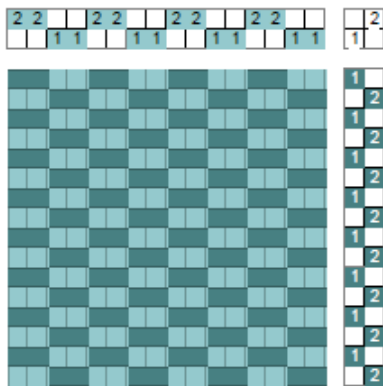


fabric or showcase a yarn. The fabric on the left uses the same yarn for the ribs as the rest of the warp, but it doesn't have to be the same.

The fabric can be woven on two shafts as shown by the drawdown below.



The drawdown and the sample below show a fabric where every thread has been doubled.



Instead of  
doubling warp  
ends, we can  
use pseudo-  
ribs, that is a  
fatter yarn can

be substituted as in the fabric shown below. The drawdown is simply that of plain weave.

