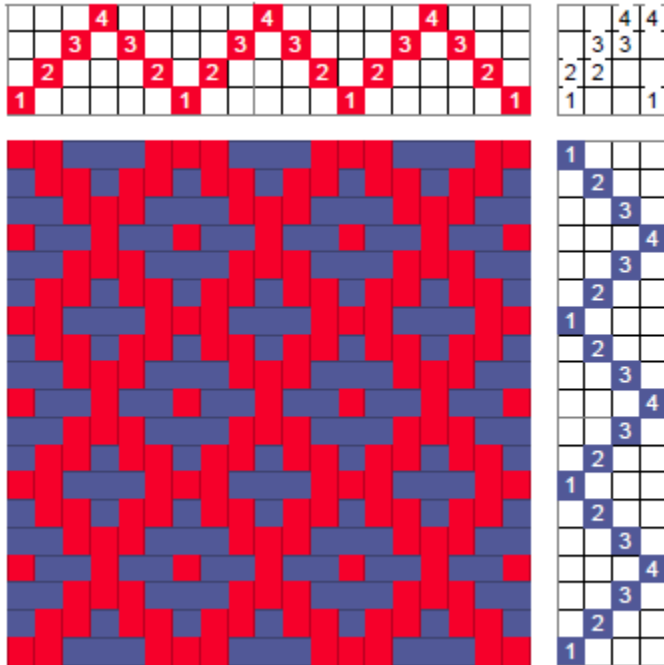


# Reverse Pointed Twill

We obtain a reverse pointed twill – well, by reversing the pointed twill!



The drawdown on the left has the pointed twill threading and is treadled as a bird's eye twill, the more visually pleasing way to weave it (see pointed twill entry).

The threading starts at shaft 1 and ends at shaft 2; there are three repeats and a balancing thread on shaft 1 at the end. In threading a project we do the same; we repeat the threading as needed and then end with a balancing thread on shaft 1.

The drawdown of the reverse pointed twill is on the right. We start the threading on shaft 4, end on shaft 3, repeat, and use a balancing thread on shaft 4 to complete the last repeat.

Except for the motifs being offset, the drawdown is the same!

So, what is the point of threading a reverse pointed twill? The usefulness comes in combining the two and obtaining interesting new twills, for example, a goose-eye twill (see entry).

