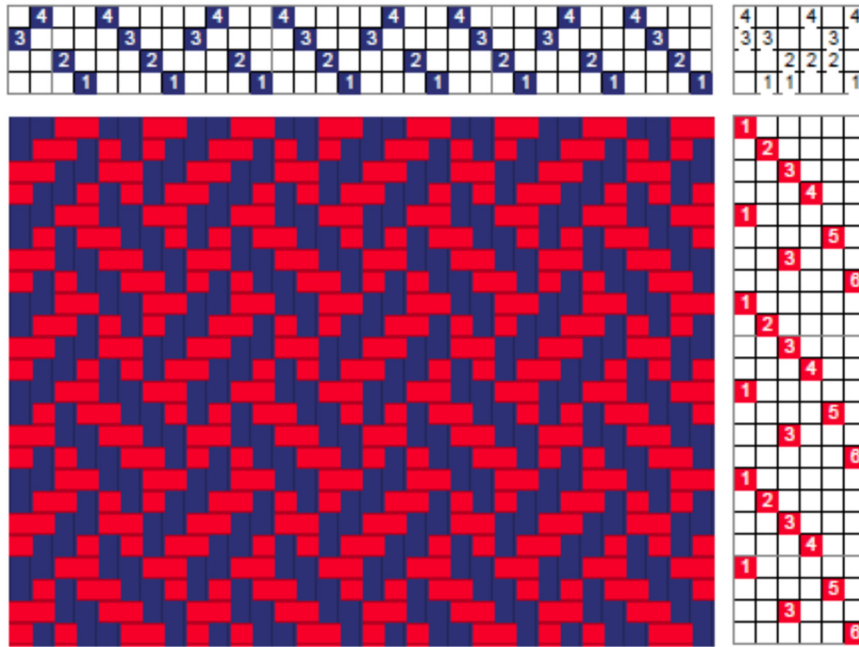


Plaited Twill

Plaited twills, sometimes called braided, get their name from the look of the motifs as the direction of the twill line changes.



On four shafts, there are two twill lines that intersect two other twill lines going in the opposite direction; this forms the plait as can be seen in the drawdown on the left and the fabric below.

The treadling sequence requires some concentration

as two of the six treadles are re-used for an eight-treadle repeat, as shown in the drawdown. However, it is worth the effort because of the resulting interesting fabric.

With more shafts more twill lines are available and the tie-up can be arranged to allow a straight draw treading.

