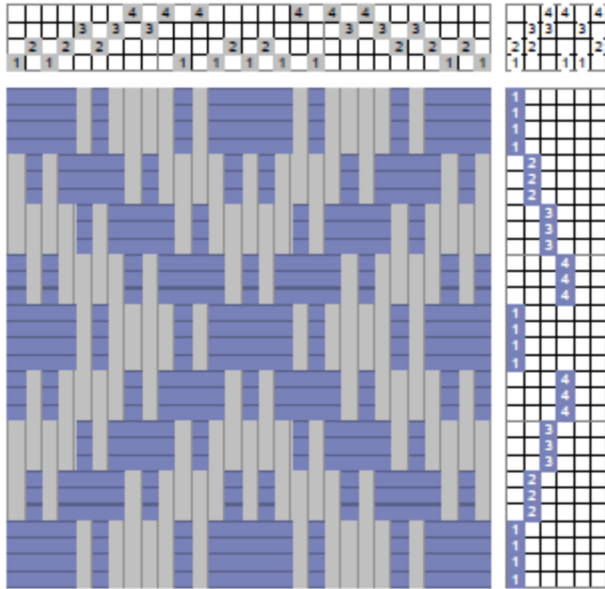


# Overshot

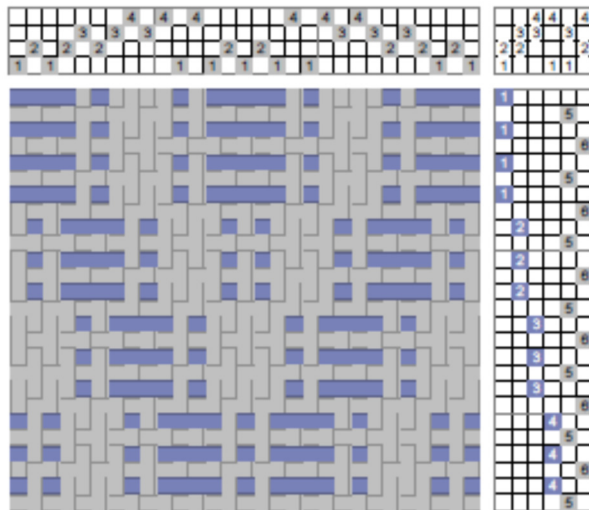
Overshot is a supplementary weft weave with four blocks on four shafts, each block sharing



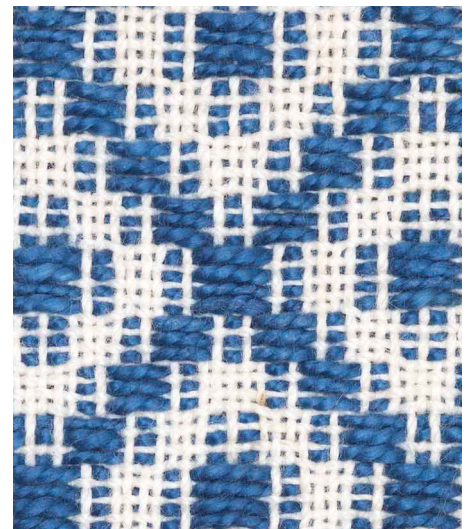
shafts with its neighbor, as shown in the drawdown on the left. When adjacent blocks share a thread, one of them is dropped (see *Blocks* entry).

It is woven with two shuttles: one carries the ground weft, traditionally the same size and color as the warp, to obtain a tabby (see entry). The other shuttle carries the supplementary weft, loftier and two to three times the size of the ground. The supplementary weft makes motifs with floats in blocks. The lower drawdown shows how it

is actually woven, with each supplementary weft alternating with a tabby shot. Both drawdowns are for a sinking shed loom to show the covered blocks. For ease of weaving on a rising shed loom, use the opposite tie-up, that is, where 1 & 2 are tied in the rising shed, tie 3 & 4, etc.



Overshot is characterized by float areas, plain weave and half-tones as can be seen in the section of the fabric below. On the other side of the fabric, the floats and plain weave areas are exchanged.



There are different ways to treadle overshot. The one shown is *tromp as writ*, each block is woven in the same order as the blocks are threaded. This is also called *star fashion*.