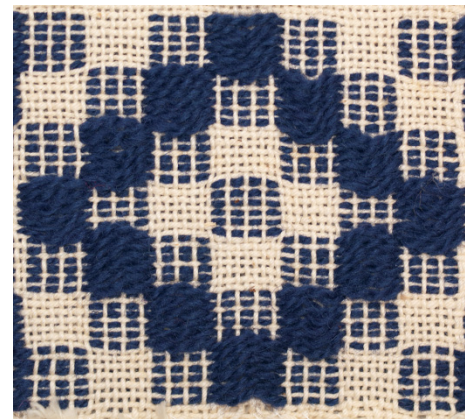
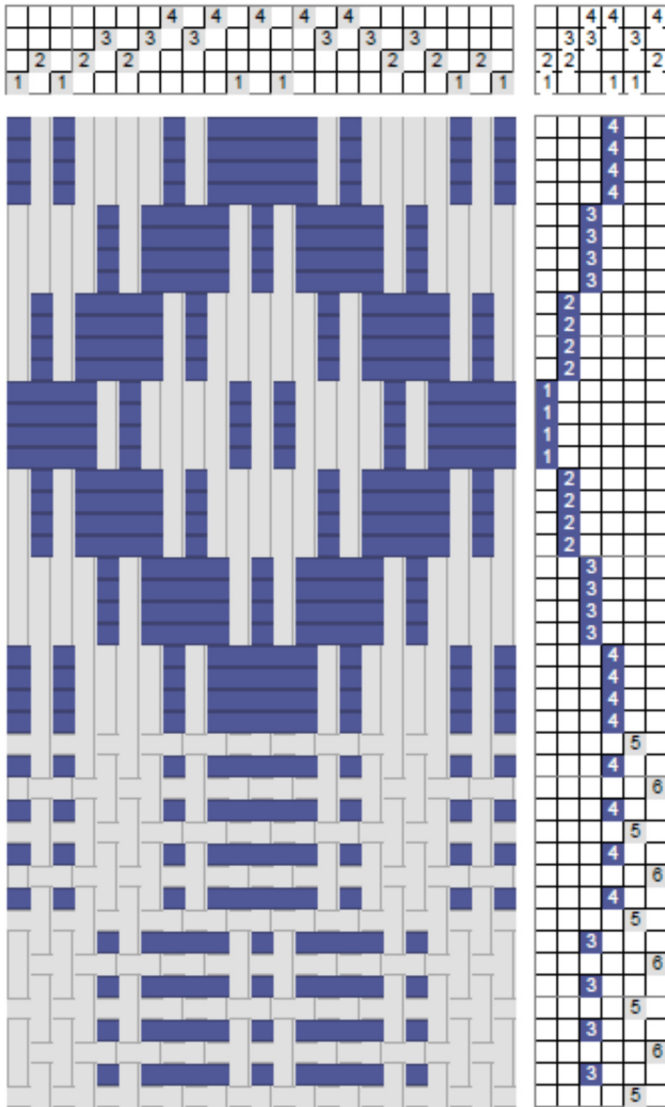


Overshot – Rose Fashion

Overshot (see entry) is a supplementary weft weave (see *Blocks* entry) with a variety of treading options.

Star fashion is the “tromp as writ” treading; rose fashion is a common possibility and it is shown in the drawdown on the left and the fabric below.



The drawdown is for a sinking shed loom, so that the blocks can be covered by the supplementary weft. To weave it on a rising shed loom, tie the opposite shafts; for example, where the sinking shed treadle is tied to shafts 1 & 2, the equivalent for a rising shed is the treadle tied to shafts 3 & 4.

The top of the drawdown shows the arrangement of the blocks and the treadling for the supplementary weft, which illustrate why it is called rose fashion. The bottom of the drawdown shows how it is woven, for two blocks, with alternating tabbies.

To convert a star fashion treadling to a rose fashion treadling, we use the rules in the table on the right.

To weave block	We treadle star fashion	We treadle rose fashion
A (1, 2)	1 & 2 (block A)	1 & 4 (block D)
B (2, 3)	2 & 3 (block B)	3 & 4 (block C)
C (3, 4)	3 & 4 (block C)	2 & 3 (block B)
D (4, 1)	4 & 1 (block D)	1 & 2 (block A)