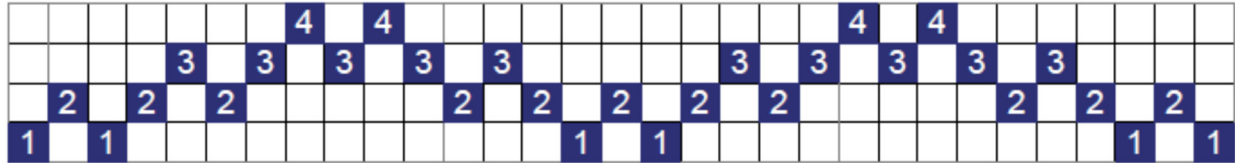
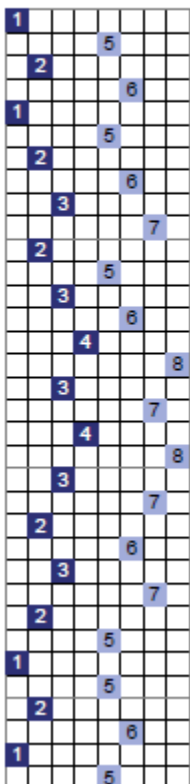
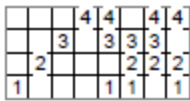


Overshot-Patterned Double Weave

Overshot-Patterned Double Weave forms a double woven fabric using an overshot pattern. This example starts with the threading of the overshot pattern shown below (2 repeats plus balancing), with a customary dark warp:



The threading is extended by adding the opposite in a lighter color to every shaft as shown below, 1 repeat plus balancing:



The fabric is woven as the usual double weave: one shaft is lifted for the top layer, three for the bottom layer. To form the pattern, a dark and light color weft alternate as in the warp. The treadling for this example uses the method by Robyn Spady (Heddlecraft Nov/Dec 2018), tromp as writ using the original threading. To form plain weave, when the shaft for the top layer is odd, the even pair is added to it to weave the bottom; for example, when weaving shaft 1 for the top, the bottom is: 1 + 2 & 4. The treadling is on the left, one repeat with balancing unit; because it requires 8 treadles, a skeleton may be needed: 1, 2, 3, 4, 1 & 3, 2 & 4. The top (left) and bottom (right) of the fabric are below.

