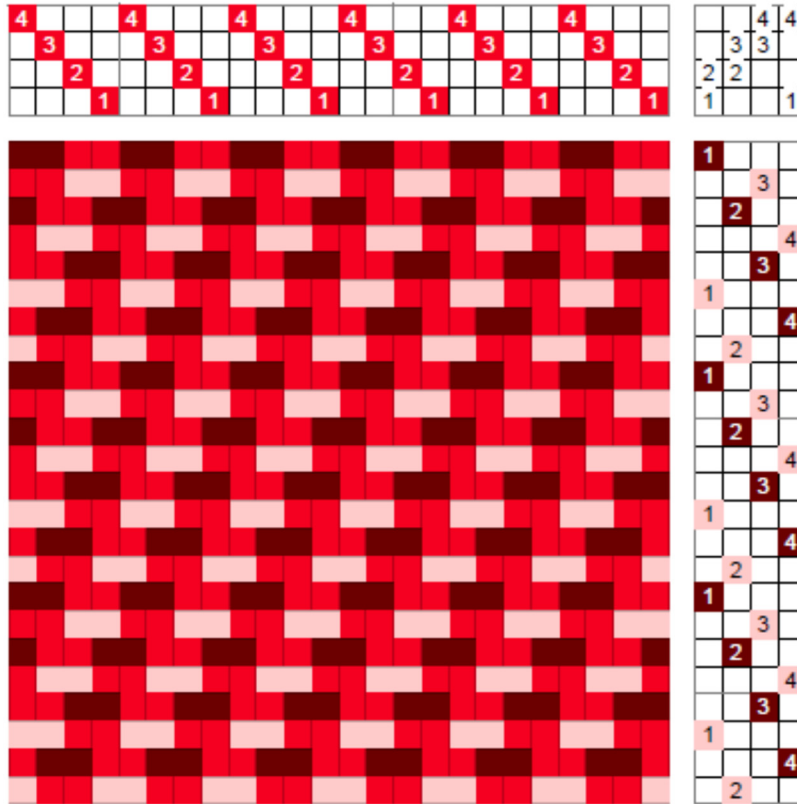


On Opposite Treading Method

This treading method (see entry) can be applied to several different structures, notably twills and it is appropriately named for what the treading directions do: each shot of the original tromp as



writ treading is followed by a shot on the opposite shafts, usually using a different color.

This is shown in the drawdown on the left using a straight twill: treading on shafts 1 & 2 with brown is followed by treading on shafts 3 & 4 – the respective opposite – with pink.

The treading directions show that both the original brown weft and

the opposite pink weft follow the straight twill tromp as writ treading.

This results in two twill lines that are offset as shown in the fabric sample on the right. The effect is best showcased with contrasting colors.

Boundweave is a specific application of on opposite, woven weft-faced; with creative colors, motifs can be woven resulting in figurative boundweave.

