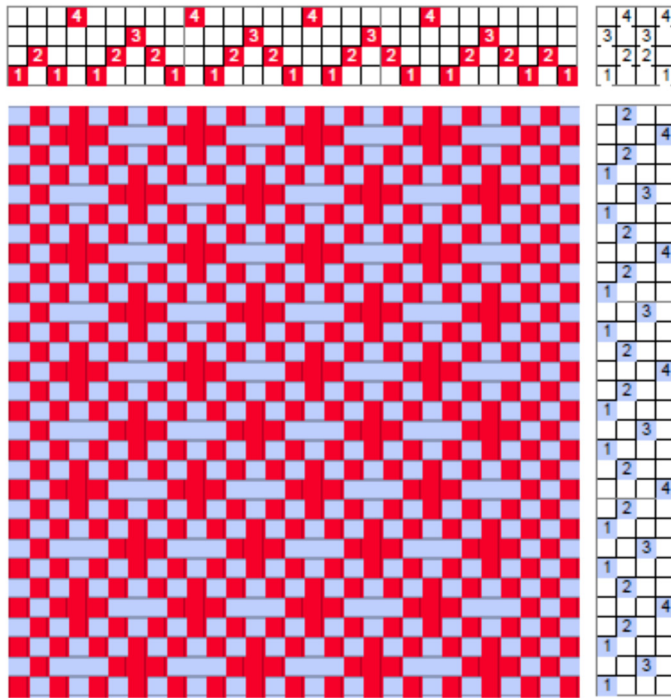
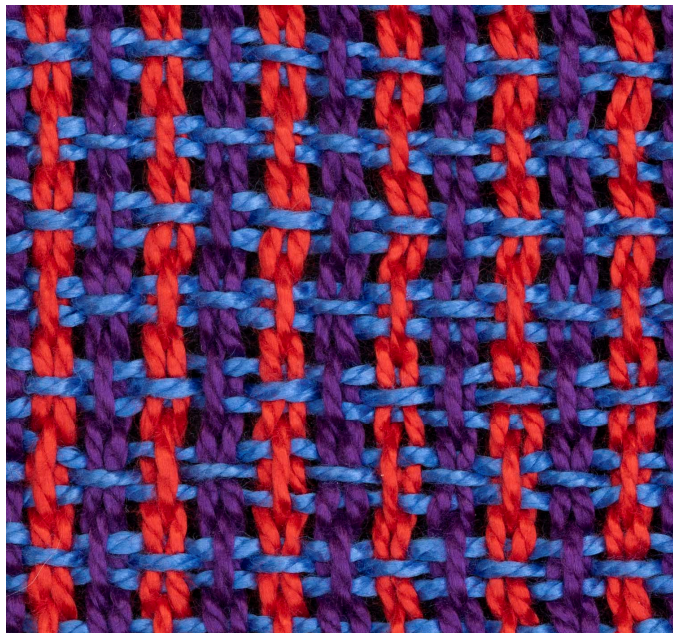
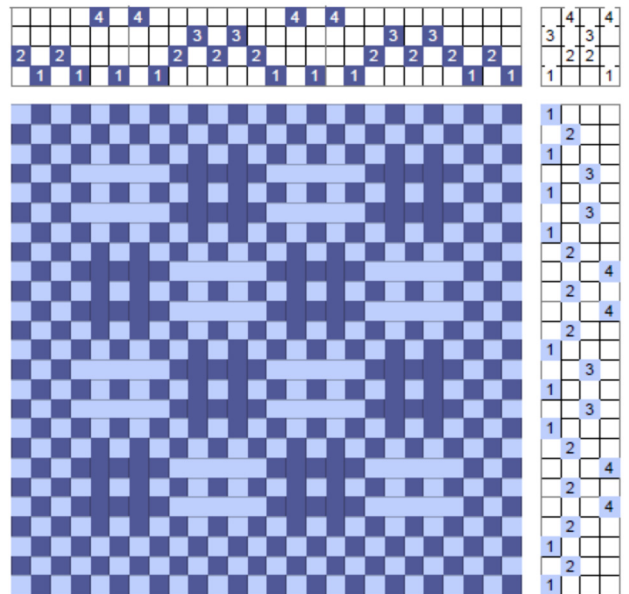


# Myggtjäll

Myggtjäll is a subset of Huck Lace (see entry), as described by Lynn Tedder (Handwoven Nov/Dec '18) although Mary Snyder in her book *Lace and Lacey Weaves* uses a pointed twill threading with the same resulting fabric.



The drawdown on the left is for Myggtjäll. The drawdown below is the usual huck lace. The only difference between the two is that in Huck Lace, the two blocks can be as wide and as long as we wish, being mindful of the float length. In Myggtjäll, each block is 3-thread long and 3-pick long. Treadling for the two blocks and for the plain weave options are the same.



On the left is the fabric; the warp is red for one block, purple for the other. The

weft is blue. The floats pull the fabric width and length-wise, making the cloth appear different than the drawdown, but the characteristic crosses are there.