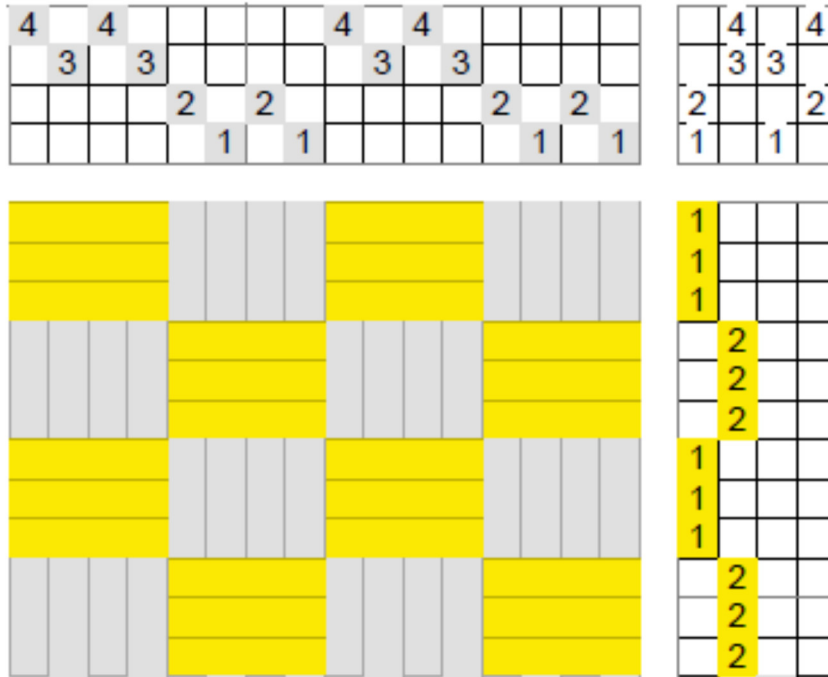


Monk's Belt

Monk's Belt is a supplementary weft weave based on a straight twill. The warp and ground weft are usually the same size and form a tabby (see entry). The supplementary weft is larger and loftier to cover the ground cloth. It has two blocks on four shafts. When one block weaves floats, the other block weaves plain weave; the



the other block weaves plain weave; the opposite is true for the other side of the cloth. The blocks are an even number of warp ends; the supplementary float is as long as the block is wide, thus caution must be used in planning the number of warp ends per block. Monk's Belt is related to overshot (see entry),

in fact some consider it a subset of it; blocks A of overshot and Monk's Belt are identical in threading; block B of Monk's Belt is identical to block C of overshot, see drawdown above. Since blocks don't share threads as in overshot, Monk's Belt has areas of floats and plain weave but no half-tones. A sample is on the right.

In the drawdown above, the grey columns that look like warp floats are in fact tabby areas. In the draft the ground tabby is not shown to preserve the look of the motifs.

