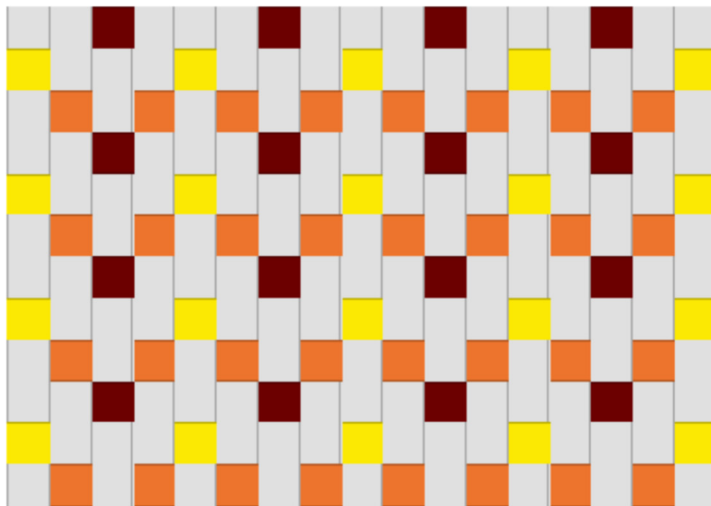


Krokbragd

Krokbragd is a weft-faced 3-shaft twill which makes wonderful rugs. The treadling is constant, the changes in color order produce interesting motifs by using characteristic columns of color shown in the fabric below. The draft on the left shows a drawdown that includes the warp, which

		3				3				3				3			
	2		2		2		2		2		2		2		2		2
1				1				1				1				1	



1		
	2	
		3
1		
	2	
		3
1		
	2	
		3
1		
	2	
		3

is not visible in the fabric.

The columns result from the same color staying with the same treadle and are made more prominent by using contrasting colors: dark (D), in this sample brown; medium (M), in this case orange; and light (L), here

yellow. The columns can be made wider by using the desired color in two treadling steps as can be seen in the fabric below.

The fabric typically has a front, shown in the fabric on the near right and a back, far right.

Krokbragd can be woven on 4 shafts by changing every other thread on shaft 3 to shaft 4. Then in treadling, shaft 4 is added to the first two treadles above.

