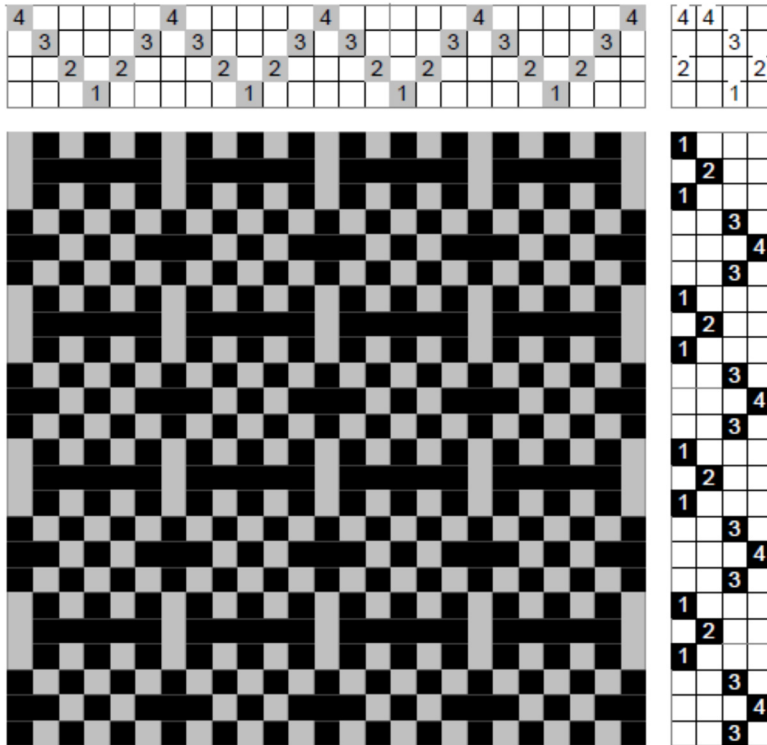


Irregular Twills

A twill that can be described by a ratio is called *regular*; for example, a 2/2 twill designation means that for every shed, there will be 2 shafts up and 2 shafts down. An *irregular* twill is one that cannot be described by a ratio. They are also called fancy twills.



On the left is a drawdown of an example of an irregular twill. The threading is a pointed twill; the tie-up shows that the first and third sheds are 2/2; the second and fourth sheds are 3/1. Thus this twill treading cannot be described by a single ratio.

There are lots of irregular twills, especially on more shafts.

From the drawdown and the fabric on the right, we can see that the motifs look predominantly like blocks; however, we know from the threading that this is a twill.

