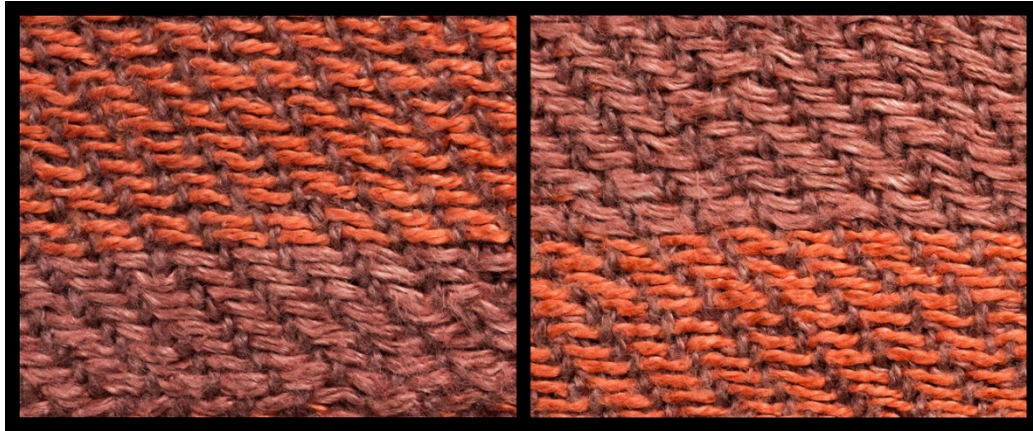
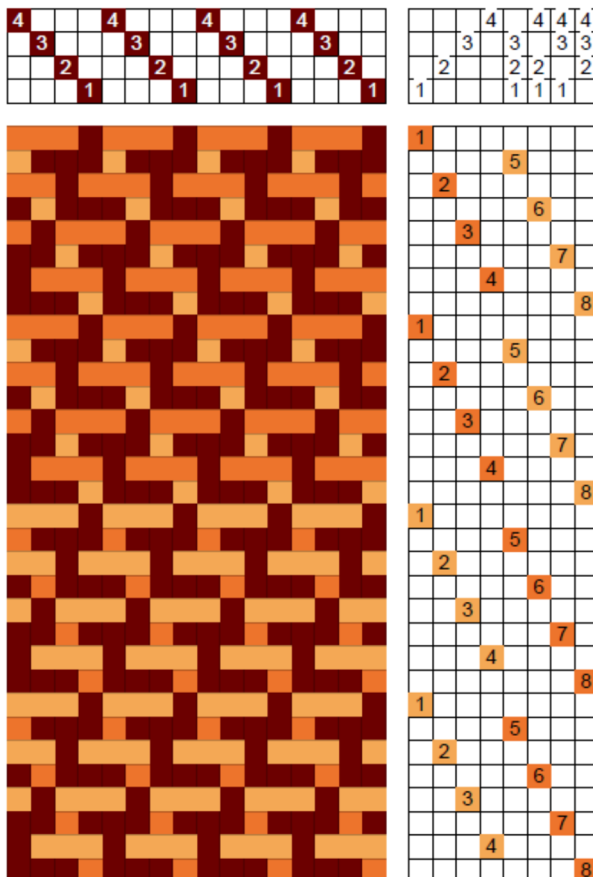


Interlocking Twill

In an interlocking twill, we alternate weaving two twills. On four shafts, we can alternate a 1/3 with a 3/1 twill. To showcase the two twills, we weave them with two different colors. The resulting fabric is weft-dominant on both sides, each with only one of the colors standing out, as shown in the fabric below with a brown warp, an orange weft and a slight lighter brown weft.



To exchange the color of the two sides, we exchange the order of the colors in the treadling as shown in the drawdown on the left.



shown in the drawdown on the left.

The draft of this drawdown is depicting how the wefts are placed in the shed, not how the fabric looks, because each color is only on one side of the fabric.

To weave both colors on each side, eight treadles are needed, as shown in the drawdown. Since most four shaft

looms have six, this skeleton tie-up can be used:

			4		4
		3		3	
	2				2
1				1	

When three shafts are needed, a combination of two treadles can be used.