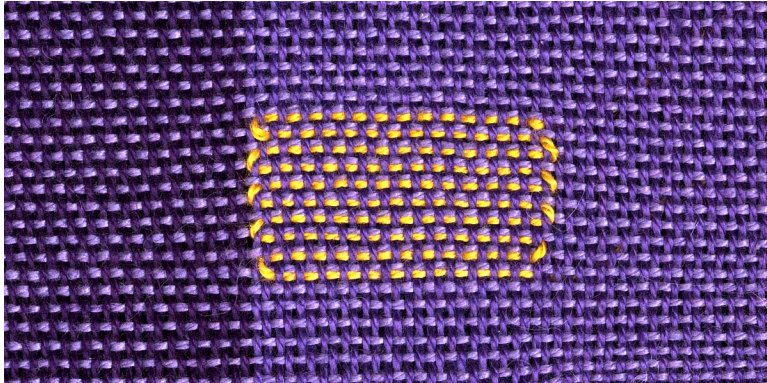


In-Lay

In-lay, sometimes called laid-in, is placing a supplementary weft anywhere we wish; it is considered a finger manipulated weave, since the in-lay is usually discontinuous.

The supplementary weft can be the same size as the ground warp and weft, as shown on the left



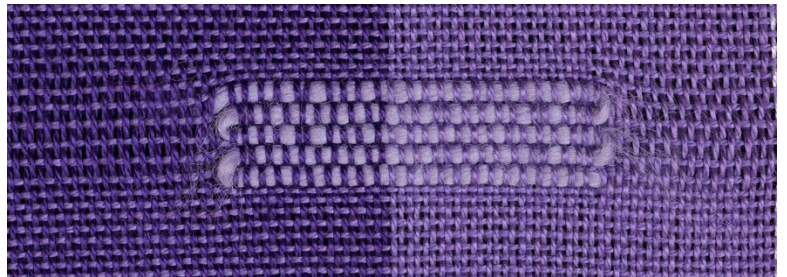
or with a different size as shown in the sample below where a larger weft is used.

Distortion of the ground cloth can occur, especially with a larger weft and this is obvious in the sample below.

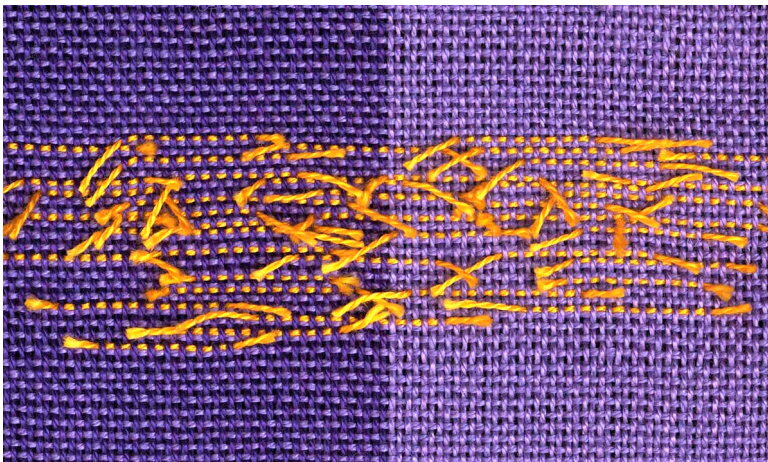
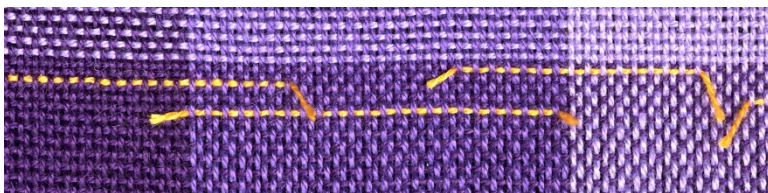
Additional plain weave shots

may have to be added where there is no in-lay to compensate for the difference.

Both of these examples show in-laid squares, but any figure can be added to a cloth.



The in-laid weft doesn't have to be a



solid thread. Below are two examples of bits of weft added as in-lay with tails emerging from the web on top of the fabric.

In the *New Key of Weaving*, Mary Black distinguishes between these two techniques and calls the samples on the left “fleck”, rather than in-lay, whether the weft is added singly as on the top sample, or interspersed in several sheds as in the bottom sample.