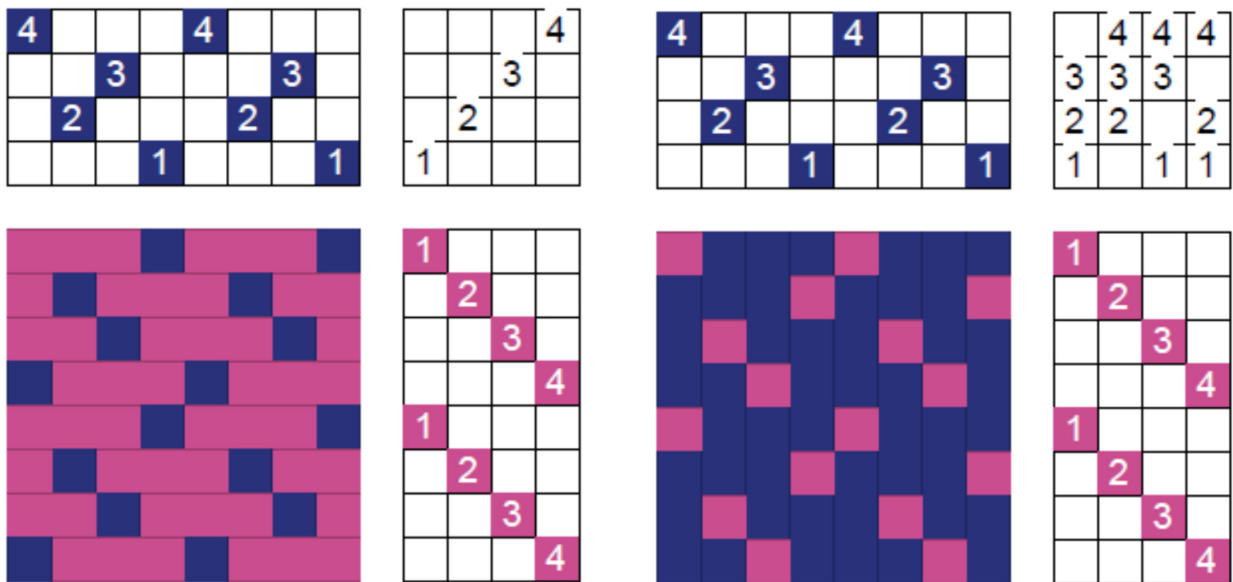
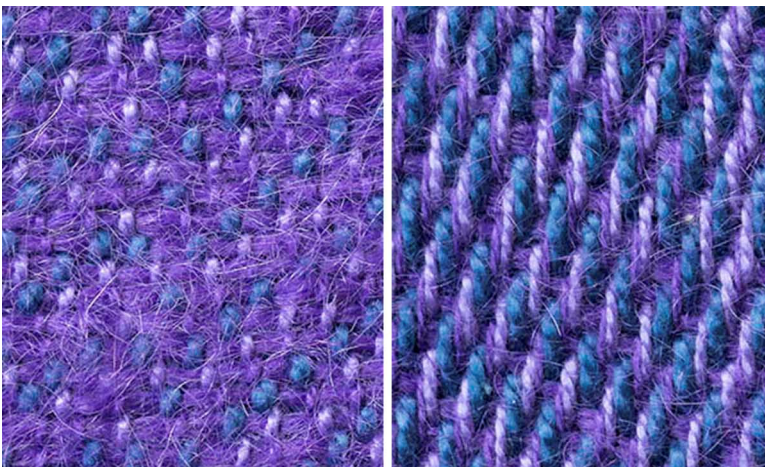


False Satins

A true satin requires at least five shafts; it has a staggered threading; a false satin on 4-shafts closely resembles a 5-shaft satin. A **false satin is a 3/1 broken twill**. Thus this is an unbalanced twill; the two sides of the cloth are different. One is more weft-faced, which is the side that generally is on top while weaving because only one shaft must be raised, as seen in the drawdown below on the left; in true satins the weft-dominant side is called a sateen. The other side of the cloth is warp-dominant, which in true satins is considered the satin side, below on the right.



The two corresponding sides of the fabric are shown below.



A false satin can also be threaded as a straight draw and treadled as a 3/1 broken twill. Here is a possible tie-up:

			4
	3		
		2	
1			