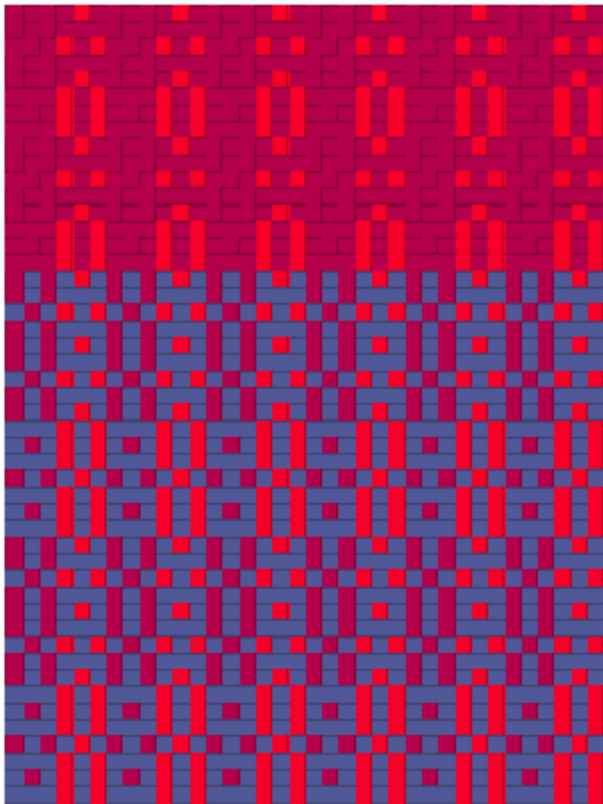
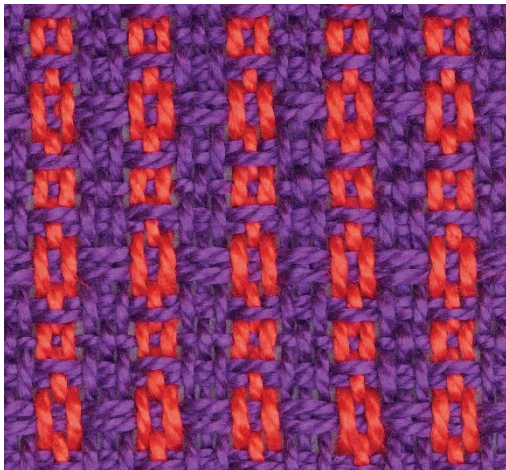
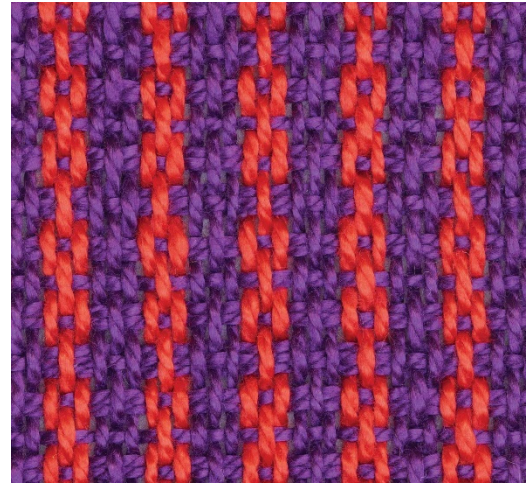


# Ducape

Ducape is one of the four of John Hargrove's weaves that uses a pointed twill for threading; each weave – bumberet, velveret, thickset, and ducape (see entries) – uses a different treadling (see



Alice Schlein *Weavers* 14: 10-13, 1991; and Madelyn Van der Hoogt *Handwoven* Jan/Feb 2017, 14-15). Weaver John Hargrove published 52 weaves in 1792 in *The Weavers Draft Book and Clothiers Assistant* (available for download from [handweaving.net](http://handweaving.net)).



From the drawdown we can see that the pointed twill threading is organized in two blocks: 2, 1, 2 in red and 3, 4, 3 in purple. Alice Schlein shows the treadling with

each subsection repeated, as in the blue treadling and fabric above (front). The treadling singly, in parallel to the other structures in the bumberet family, is in purple, front of fabric (rising shed) top right, back of the fabric above on the left.