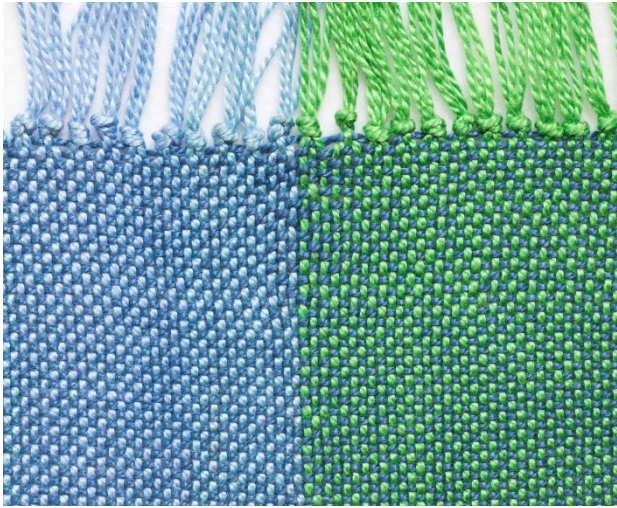


# Double Weave

Two shafts are needed to weave plain weave; with four shafts we can weave two layers! We can weave it so the two layers are connected on one side, giving us double the width of our loom, or we can make it a tube connected on both sides. The sett is the sum of the setts of each layer. For



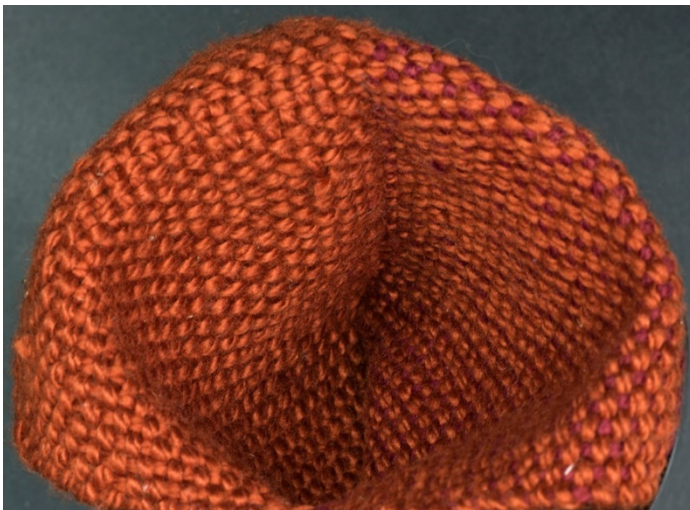
ease of weaving, the threading interlaces the two layers; below the top layer is on 1 & 3 (in green), the bottom layer on 2 & 4 (in blue):

			4
		3	
	2		
1			

On the left is a double weave fabric with a light blue warp as the bottom layer and a green warp as the top layer, woven with a dark blue weft

and connected on the left side. The directions for it are as follows; the arrows indicate the direction of the shuttle; to connect the fabric on the right side, reverse the shuttle direction.

1	←	Shot # 1 of top layer, shaft # 1 lifted
1 & 3 & 2	→	Shot # 1 of bottom layer, shaft # 2 lifted, with top layer 1 & 3, raised to get it “out of the way”
1 & 3 & 4	←	Shot # 2 of bottom layer, shaft # 4 lifted, with top layer 1 & 3, raised to get it “out of the way”
3	→	Shot # 2 of top layer, shaft # 3 lifted



On the left is a double weave tube. The treadling directions are below.

1
1 & 3 & 2
3
1 & 3 & 4

The first two shots are the same as a double cloth, the last two are reversed.