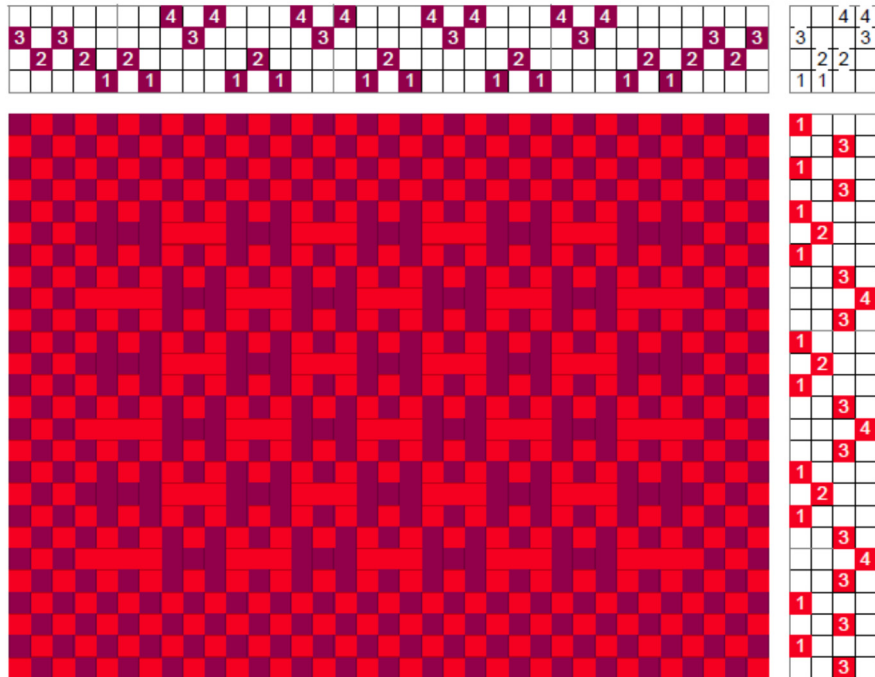


Canvas Weave II

In an early issue of *Shuttle Spindle & Dyepot* (#8) Ena Marston shows a needlepoint embroidered on a canvas weave. What I prefer about her version of this structure, compared to



Canvas Weave I (see entry) is that it can weave plain weave across the fabric and down the length of the cloth. This is the result of simply reducing the number of multiple threads on shafts 2 and 3, and the multiple treading of 1 & 2 and 3 & 4.

I have added to her drawdown the selvages

threading 3, 2 and treading 1 & 3 vs. 2 & 4 for plain weave across the fabric as shown above.

The fabric is below. The treading of the pattern can be made easier as shown below by using all six treadles usually available on 4-shaft loom:

			4	4	4
3		3		3	
	2		2		2
1	1	1			

1										
			4							
				4						
					4					
						2				
							3			
								4		
									5	
										6

