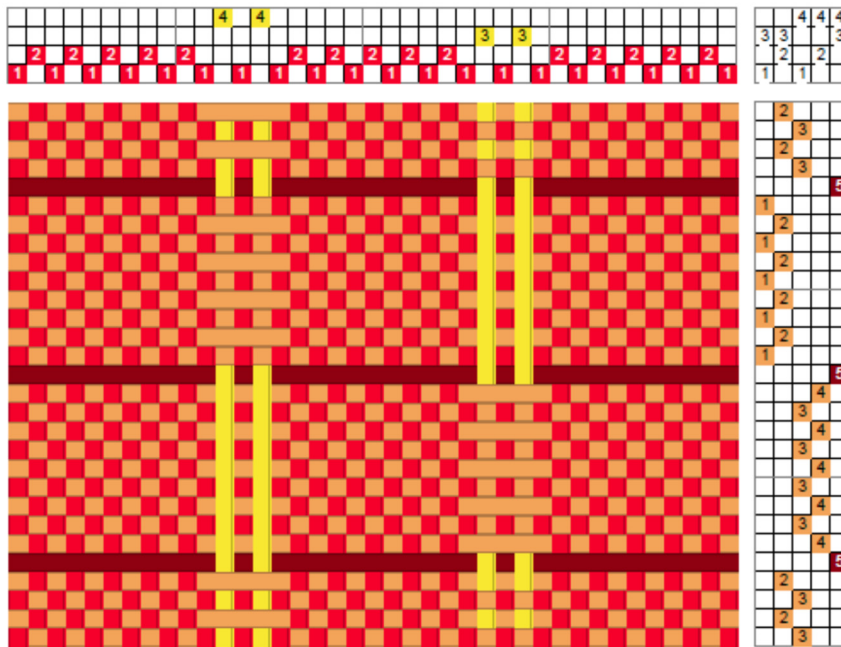


Cannelé

Cannelé, sometimes spelled canelé, is a compound structure, two warps and two wefts. I learned about Cannelé from Norma Smayda of the Sounderstown Weaving School. A supplementary warp and weft intersect to form a layer of netting superimposed to the ground cloth.

The drawdown below shows the ground cloth threaded on shafts 1 and 2, and the additional warp on shafts 3 and 4. The smaller ground weft forms plain weave in the areas threaded 1, 2 and



vertical floats with the supplementary warp at the top or bottom where shafts 3 and 4 are threaded (see fabric below). At regular intervals, the supplementary weft forms floats anchored only by the supplementary warp. Both the length of the plain weave threading and treadling can be lengthened or shortened depending on the sett and desired effect.

The top of the fabric on the right shows the supplementary warp pulling the supplementary weft to form an interesting grid superimposed to the ground cloth.

The bottom of the cloth is shown below.

