

# Brocade

Brocade is a treadling method (see entry) that can be applied to any warp, even without a shed, as suggested by Mary Black (*The New Key of Weaving*) or added as a supplementary weft as suggested by Helen Bress (*The Weaving Book Pattern and Ideas*).

To weave brocade without a shed, the decorative weft is placed on top of the warp as shown on

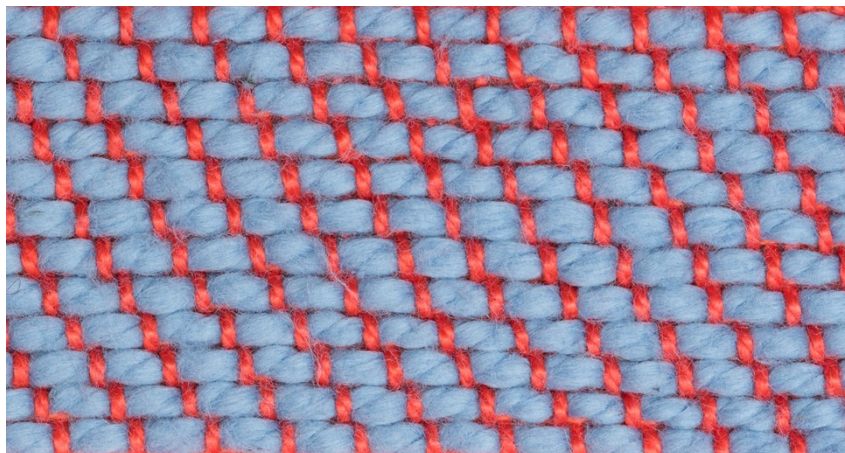
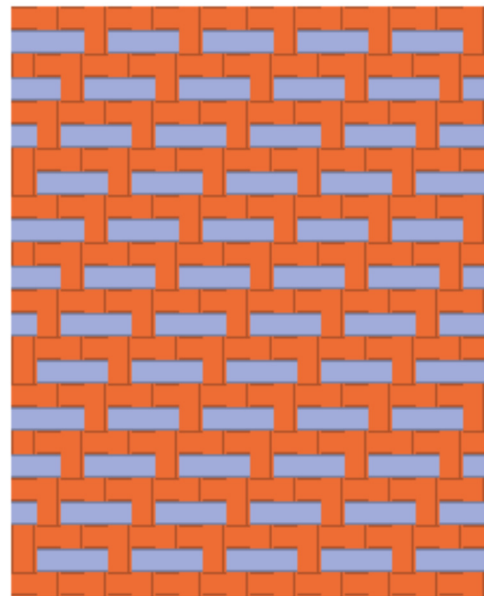
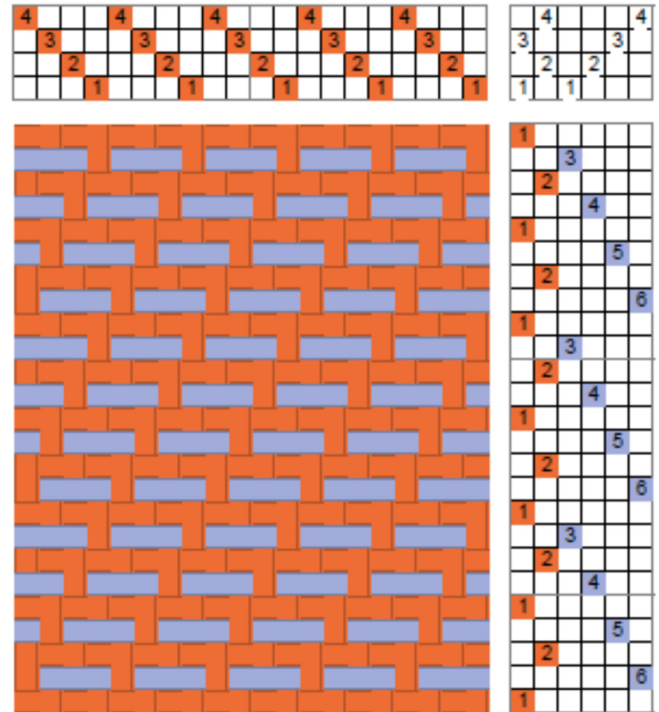


the left for as long as desired. The thread is continuous and goes underneath the cloth, anchored between two

warp threads. Any design is possible, but it is constrained by the floats underneath.

The other way to weave a brocade is as an unbalanced treadling as shown in the drawdown on the right, in this example using the straight twill. Tabbies anchor the larger decorative weft which can have long floats.

To emphasize the design, the tabby weft can be smaller than the warp, as shown in the fabric below which uses a 10/2 cotton as ground weft over a 5/2 cotton for the warp and a 2/2 cotton as the brocade weft.



Here, too, any desired motif can be made and brocades can be quite intricate with complex looms.