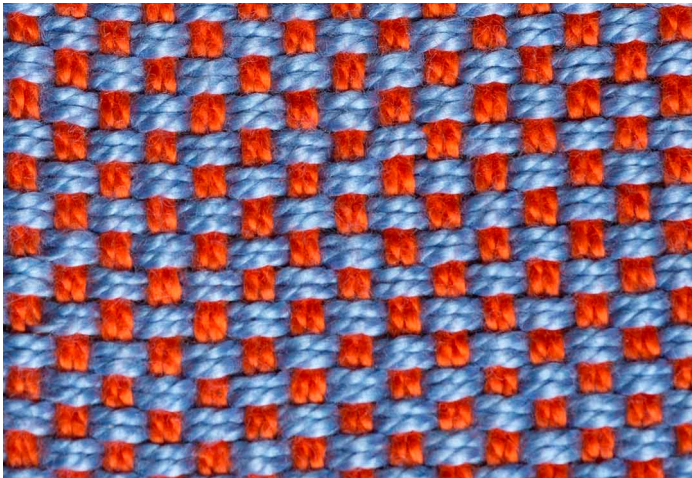


Basket Weave

Basket weave is a plain weave derivative; at least two warp threads interlace with two weft threads; more threads can be used depending on how long of a float is desired.

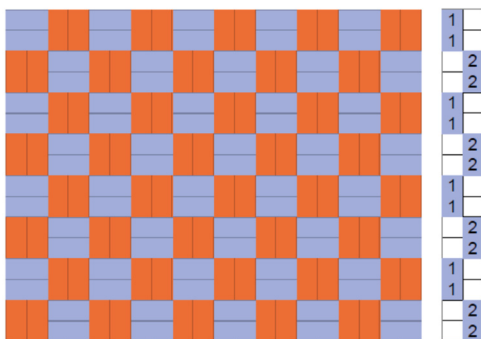
The fabric below has a warp of two orange threads on the same shaft and two blue weft threads.



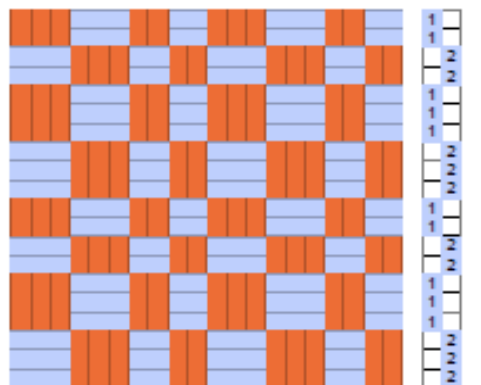
A floating selvage is necessary to weave basket weave, unless using a two-bobbin shuttle.

There are three drawdowns shown; the first below on the left is to weave basket weave with two shafts, the second below on the left is on four shafts to weave different size blocks of floats.

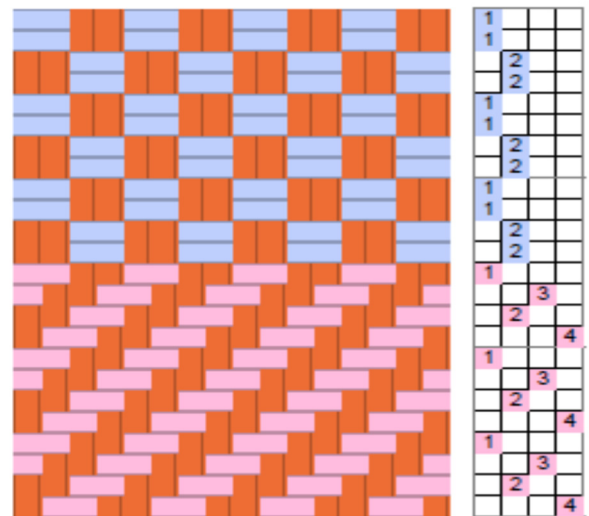
2	2		2	2		2	2		2	2		2	2		2	2		2	2		2	2		2	2		2	2		2	2		2	2		2	2
		1	1		1	1		1	1		1	1		1	1		1	1		1	1		1	1		1	1		1	1		1	1		1	1	



4	4	4				3	3	3				4	4	4				3	3	3				2	2				2	2				1	1			



4				4				4				4				4				4				4				4				4				4				4			
		3				3				3				3				3				3				3				3				3				3				3	



The drawdown on the right is a straight draw, giving the possibility of weaving a straight twill (see entry) as well as the basket weave.

Even though basket weave is a plain weave derivative, it has floats over at least two threads; thus the warp sett for any given yarn should be closer than for plain weave.

See also *Basket, Canvas and Huck Lace Comparison* entry.