

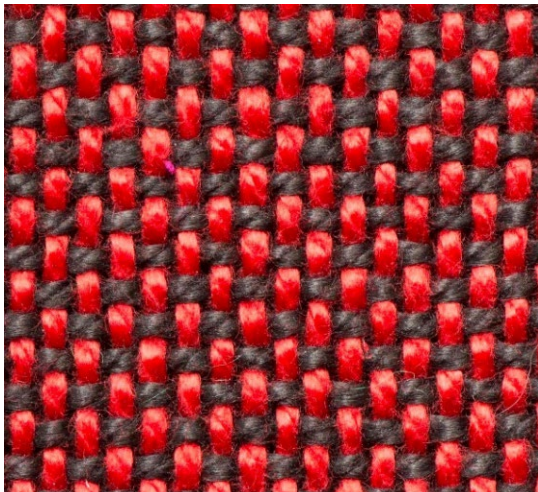
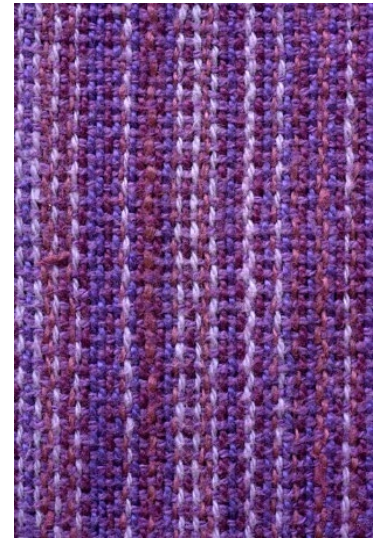
Beginning Weaving Class

January 25 through March 1
Wednesdays 10:30 am to 1:00 pm,

Bill Waller Craft Center
The Craftsmen's Guild of Mississippi
950 Rice Road, Ridgeland, MS 39157

Join us to learn to weave on a shaft floor loom. You will prepare a warp, dress the loom, and weave a sash. All equipment will be provided.

Through this class you will gain an understanding of the terminology, tools and techniques used in weaving. Instructors and exhibiting members of the Mississippi Craftsmen's Guild, Marcy Petrini and Beth Palmer, will guide you through each step of the process.



Classes will be held in the Weaving Loft at the Bill Waller Craft Center. Participation in all six class sessions will be necessary to complete the project.

Class cost is \$280.00 plus \$10 for materials to weave the sash (payable to the instructors). Paid registration must be received by Monday, January 17, 2023, to secure a spot in this class.

A minimum of four participants is required to conduct the class. The number of participants is limited by the number of looms.

To register, contact Sheri Cox at 601-856-7546.